



**India Meteorological Department  
(Ministry of Earth Sciences)**

**NATIONAL BULLETIN NO. 12 (BOB/05/2023)**

**TIME OF ISSUE:1455 HOURS IST**

**DATED: 17.11.2023**

**FROM: INDIA METEOROLOGICAL DEPARTMENT (FAX NO. 24643965/24699216/24623220)**

**TO: CONTROL ROOM, NDM, MINISTRY OF HOME AFFAIRS (FAX.NO. 23093750)**

**CONTROL ROOM NDMA (FAX.NO. 26701729)**

**CABINET SECRETARIAT (FAX.NO.23012284, 23018638)**

**PS TO HON'BLE MINISTER FOR S & T AND EARTH SCIENCES (FAX NO.23316745)**

**SECRETARY, MOES (FAX NO. 24629777)**

**H.Q. (INTEGRATED DEFENCE STAFF AND CDS) (FAX NO. 23005137/23005147)**

**DIRECTOR GENERAL, DOORDARSHAN (23385843)**

**DIRECTOR GENERAL, AIR (23421105, 23421219)**

**PIB MOES (FAX NO. 23389042)**

**UNI (FAX NO. 23355841)**

**D.G. NATIONAL DISASTER RESPONSE FORCE (NDRF) (FAX NO. 26105912, 2436 3260)**

**DIRECTOR, PUNCTUALITY, INDIAN RAILWAYS (FAX NO. 23388503)**

**CHIEF SECRETARY, ODISHA (FAX NO. 0674-2536660)**

**CHIEF SECRETARY, WEST BENGAL (FAX NO. 033-22144328)**

**CHIEF SECRETARY, ANDHRA PRADESH (FAX NO. 0863-2441029, 08645-246600)**

**CHIEF SECRETARY, TAMIL NADU (FAX NO 044-25672304)**

**CHIEF SECRETARY, PUDUCHERRY (FAX NO 0413-2334145)**

**ADMINISTRATOR, ANDAMAN & NICOBAR ISLANDS (FAX NO. 03192- 232656)**

**CHIEF SECRETARY, GOVT. OF TRIPURA (FAX NO. 0381-2414013, 2413200)**

**CHIEF SECRETARY, GOVT. OF MIZORAM (FAX NO. 0389-2322745, 2320588)**

**CHIEF SECRETARY, GOVT. OF MANIPUR (FAX NO. 0385-2452629)**

**CHIEF SECRETARY, GOVT. OF NAGALAND (FAX NO. 0370-2270057)**

**CHIEF SECRETARY, GOVT. OF ASSAM (FAX NO. 0361-2260900)**

**CHIEF SECRETARY, GOVT. OF MEGHALAYA (FAX NO. 0364-2225978)**

**Sub: Cyclonic Storm “Midhili” (pronounced as “Midhili”) over Northwest and adjoining Northeast Bay of Bengal**

The cyclonic storm “**Midhili**” (pronounced as “**Midhili**”) over Northwest and adjoining Northeast Bay of Bengal moved north-northeastwards with a speed of 26 kmph during past 6 hours and lay centered at 1130 hours IST of today, the 17<sup>th</sup> November over Northwest and adjoining Northeast Bay of Bengal near latitude 21.2°N and longitude 89.5°E, about 210 km east-southeast of Digha (West Bengal), 110 km southwest of Khepupara (Bangladesh) and 270 km west-southwest of Chittagong (Bangladesh).

It is likely to continue to move north-northeastwards and cross Bangladesh coast close to Khepupara with wind speed of 60-70 kmph gusting to 80 kmph during evening and night of 17<sup>th</sup> November, 2023.

*Forecast track and intensity are given below:*

<b>Date/Time (IST)</b>	<b>Position (Lat. °N/ long. °E)</b>	<b>Maximum sustained surface wind speed (Kmph)</b>	<b>Category of cyclonic disturbance</b>
17.11.23/1130	21.2/89.5	70-80 kmph gusting to 90 kmph	Cyclonic Storm
17.11.23/1730	22.1/90.2	60-70 kmph gusting to 80 kmph	Cyclonic Storm
17.11.23/2330	22.9/90.8	55-65 kmph gusting to 75 kmph	Deep Depression
18.11.23/0530	23.7/91.5	40-50 kmph gusting to 60 kmph	Depression

## **Warnings:**

### **(i) Rainfall Warning (graphics enclosed):**

- Light to moderate rainfall at many places with isolated heavy rainfall is likely over coastal districts of West Bengal (North 24 Parganas) till evening of 17<sup>th</sup> November.
- Light to moderate rainfall at most places with isolated heavy to very heavy rainfall is likely over Nagaland, Manipur, Mizoram & Tripura on 17<sup>th</sup> & 18<sup>th</sup> November with **extremely heavy rainfall at isolated places over Mizoram & Tripura on 17<sup>th</sup> November.**
- Light to moderate rainfall at many places with isolated heavy rainfall is likely over south Assam and east Meghalaya on 17<sup>th</sup> & 18<sup>th</sup> November.

### **(ii) Wind warning (graphics enclosed):**

- **North Bay of Bengal and along & off Bangladesh coast: Gale wind** speed reaching **70-80 kmph gusting to 90 kmph** is prevailing and would decrease gradually thereafter becoming **60-70 kmph gusting to 80 kmph** from 17<sup>th</sup> evening to night (during landfall). After landfall, **Squally wind** speed reaching **40-50 kmph gusting to 60 kmph** till morning of 18<sup>th</sup> November and it would decrease thereafter.
- **Along & off West Bengal Coast: Squally wind** speed reaching **50-60 kmph gusting to 70 kmph** is prevailing and would continue till night of 17<sup>th</sup> and decrease thereafter.
- **Strong wind** speed reaching **30-40 kmph gusting to 50 kmph** is likely over Tripura, Mizoram, Manipur and south Assam till 18<sup>th</sup> November evening.

### **(iii) Sea Condition:**

- **High** sea condition is prevailing over North Bay of Bengal and along & off Bangladesh coast and is likely to continue till night of 17<sup>th</sup> November, **very rough to rough** thereafter till morning of 18<sup>th</sup> November and improve thereafter.
- **Rough to very rough** sea condition is likely along & off West Bengal coast till night of 17<sup>th</sup> November.

### **(iv) Fishermen Warning:**

Fishermen are advised not to venture into

- North Bay of Bengal and along & off Bangladesh coast till morning of 18<sup>th</sup> November.
- Along & off West Bengal coast till 17<sup>th</sup> November night.

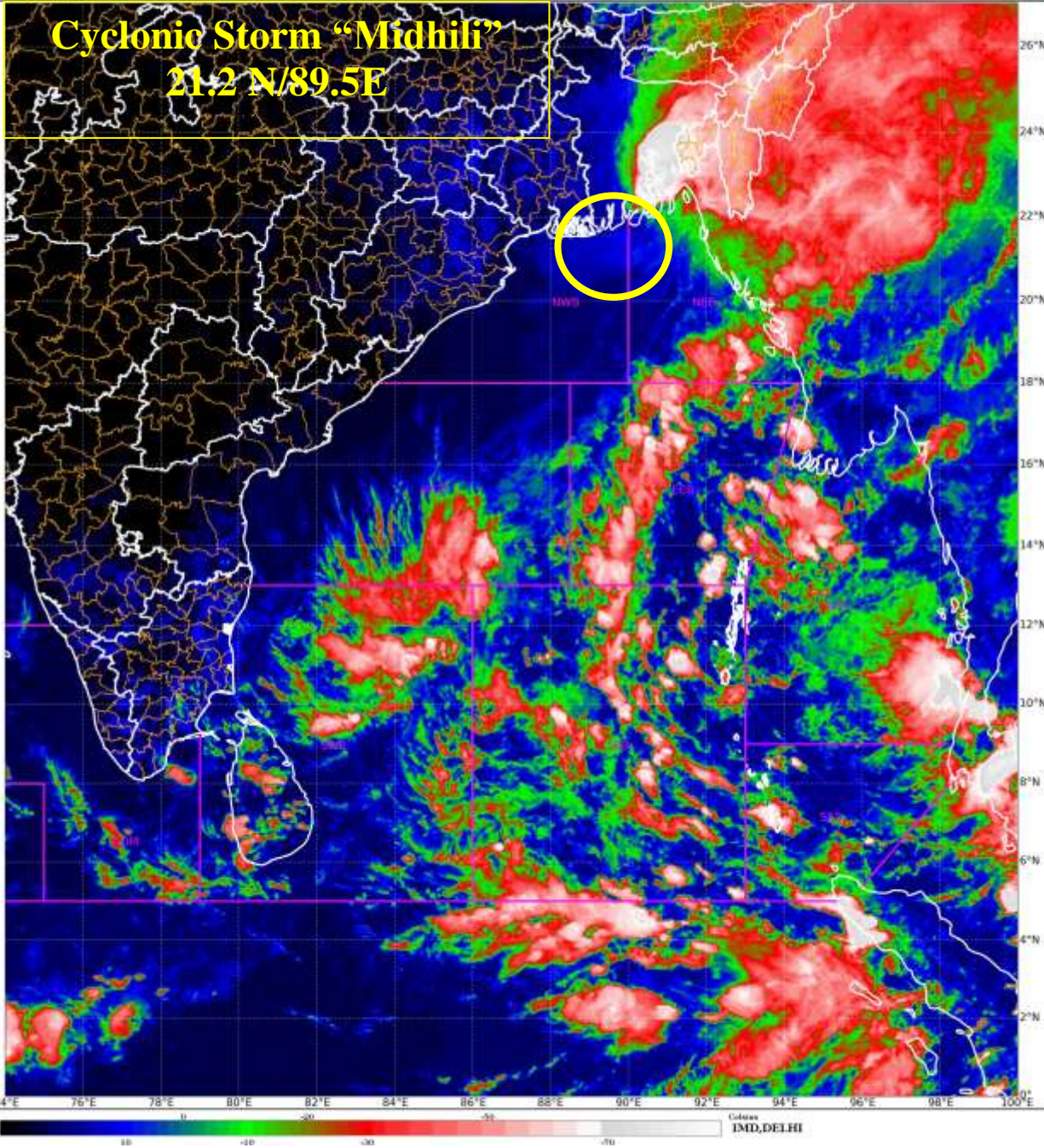
### **(v) Damage Expected & Action Suggested for coastal areas of West Bengal (North 24 Parganas) during next 12 hours:**

- Damage to thatched huts and loose/unsecured structures..
- Minor damage to power and communication lines due to breaking of branches.
- Major damage to Kutcha and minor damage to Pucca roads.
- Some damage to paddy crops, banana, papaya & drumstick trees and orchards.
- Sea water inundation in low lying areas after erosion of Kutcha embankments.
- Partial Damage to standing crops in coastal areas of west Bengal.
- Damages to Kutcha embankments.

**The system is under continuous surveillance and the next message will be issued at 1730 hours IST of today, the 17<sup>th</sup> November, 2023.**

**(Ananda Kumar Das)**  
**Scientist F, Cyclone Warning, New Delhi**

*Copy to: ACWC Chennai/ ACWC Kolkata/CWC Bhubaneswar/CWC Vishakhapatnam/MC Amravati/ RMC Guwahati/MC Agartala/MC Mizoram/MC Manipur/MC Nagaland/MC Shillong*







**OBSERVED AND FORECAST TRACK AND INTENSITY ALONGWITH CONE OF UNCERTAINTY IN ASSOCIATION WITH CYCLONIC STORM MIDHILI OVER NORTHWEST AND ADJOINING NORTHEAST BAY OF BENGAL BASED ON 0600 UTC (1130 HRS IST) OF 17TH NOVEMBER 2022**



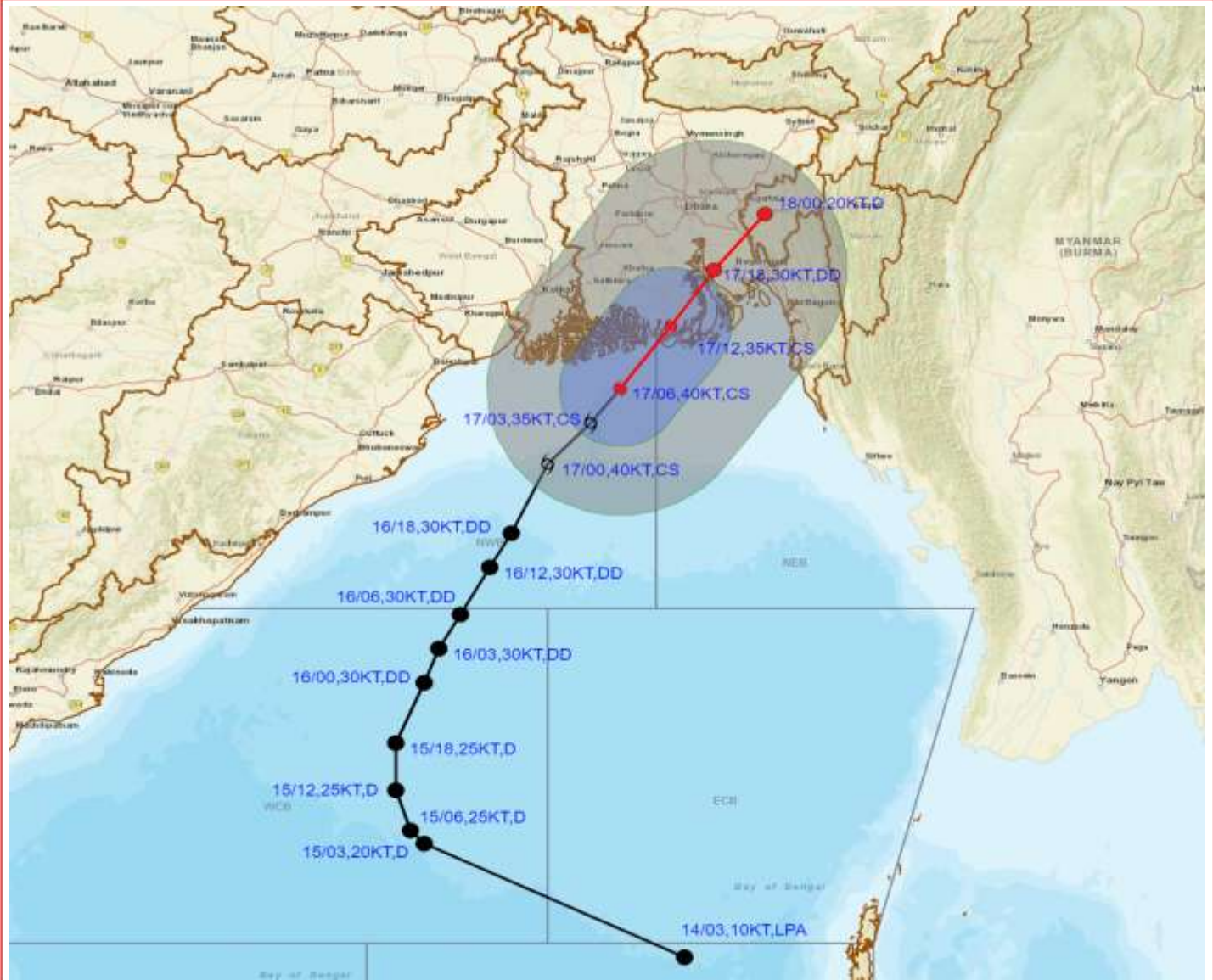
DATE/TIME IN UTC  
 IST=UTC + 0530  
 L: LOW PRESSURE AREA  
 WML: WELL MARKED LOW PRESSURE AREA  
 D: DEPRESSION (17-27 KT)  
 DD: DEEP DEPRESSION (28-33 KT)  
 CS: CYCLONIC STORM (34-47 KT)  
 SCS: SEVERE CYCLONIC STORM (48-63KT)  
 VSCS: VERY SEVERE CYCLONIC STORM (64-89 KT)  
 ESCS: EXTREMELY SEVERE CYCLONIC STORM (90-119 KT)  
 SuCS: SUPER CYCLONIC STORM ( $\geq 120$  KT)

- LESS THAN 34 KT
- 34-47 KT
- $\geq 48$  KT
- OBSERVED TRACK
- FORECAST TRACK
- CONE OF UNCERTAINTY

Forecast Date and Time (UTC)	DISTANCE (KM) AND DIRECTION FROM STATIONS		
	DIGHA	KHEPUPARA	CHITTAGONG (AMBAGAN)
17.11.23/0600	210, ESE	110, SW	270, WSW
17.11.23/1200	290, ENE	10, N	220, SW



**OBSERVED AND FORECAST TRACK AND INTENSITY ALONG WITH QUADRANT WIND DISTRIBUTION IN ASSOCIATION WITH CYCLONIC STORM MIDHILI OVER NORTHWEST AND ADJOINING NORTHEAST BAY OF BENGAL BASED ON 0600 UTC (1130 HRS IST) OF 17TH NOVEMBER 2023.**



DATE/TIME IN UTC  
 IST=UTC + 0530  
 L: LOW PRESSURE AREA  
 WML: WELL MARKED LOW PRESSURE AREA  
 D: DEPRESSION (17-27 KT)  
 DD: DEEP DEPRESSION (28-33 KT)  
 CS: CYCLONIC STORM (34-47 KT)  
 SCS: SEVERE CYCLONIC STORM (48-63KT)  
 VSCS: VERY SEVERE CYCLONIC STORM (64-89 KT)  
 ESCS: EXTREMELY SEVERE CYCLONIC STORM (90-119 KT)  
 SuCS: SUPER CYCLONIC STORM (≥ 120 KT)

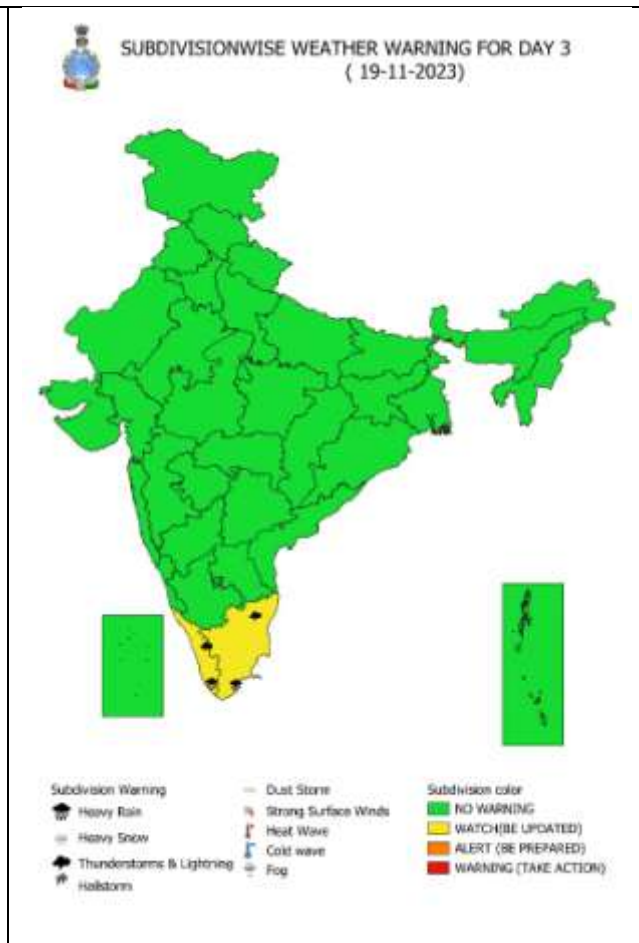
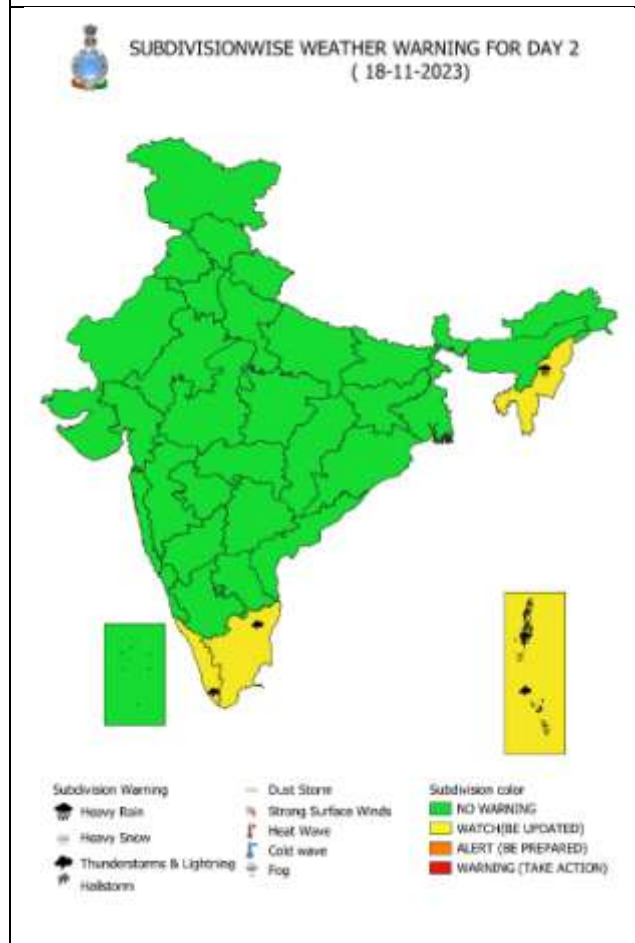
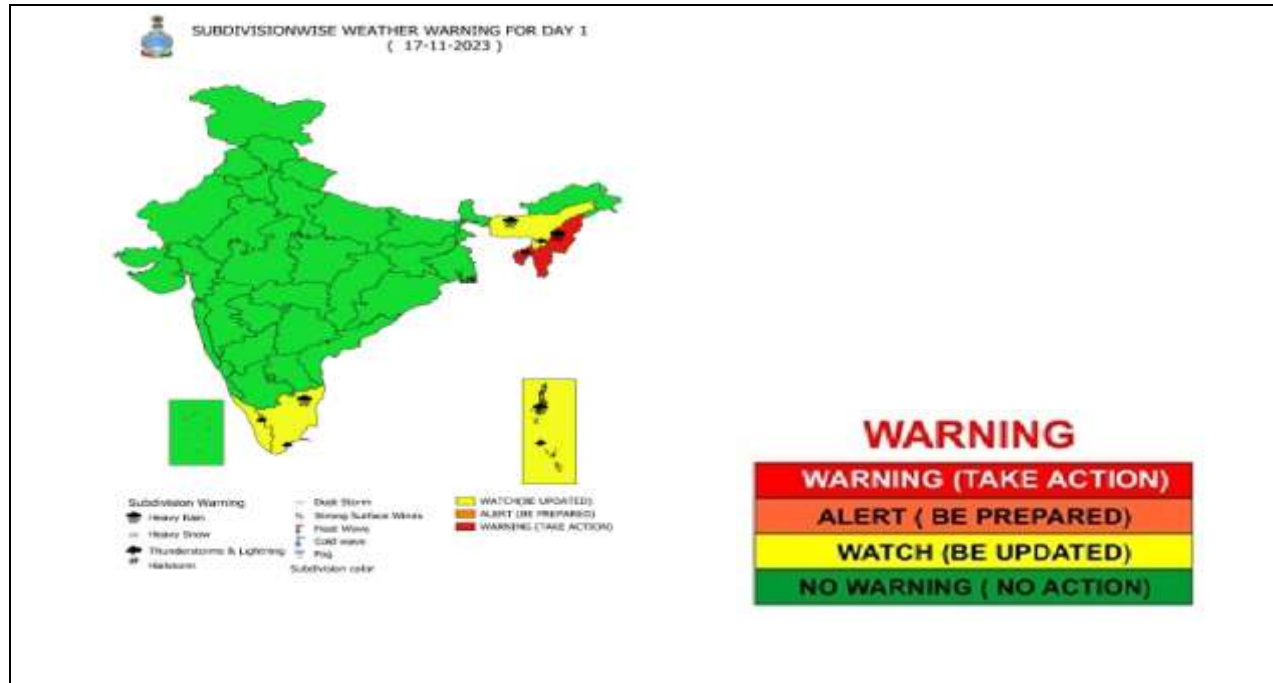
● LESS THAN 34 KT  
 ○ 34-47 KT  
 ● ≥ 48 KT  
 — OBSERVED TRACK  
 — FORECAST TRACK  
 ○ CONE OF UNCERTAINTY  
 AREA OF MAXIMUM SUSTAINED WIND SPEED:  
 — 28-33 KT (52-61 KMPH)  
 — 34-49 KT (62-91 KMPH)  
 — 50-63 KT (92-117 KMPH)  
 — ≥ 64 KT (≥118 KMPH)

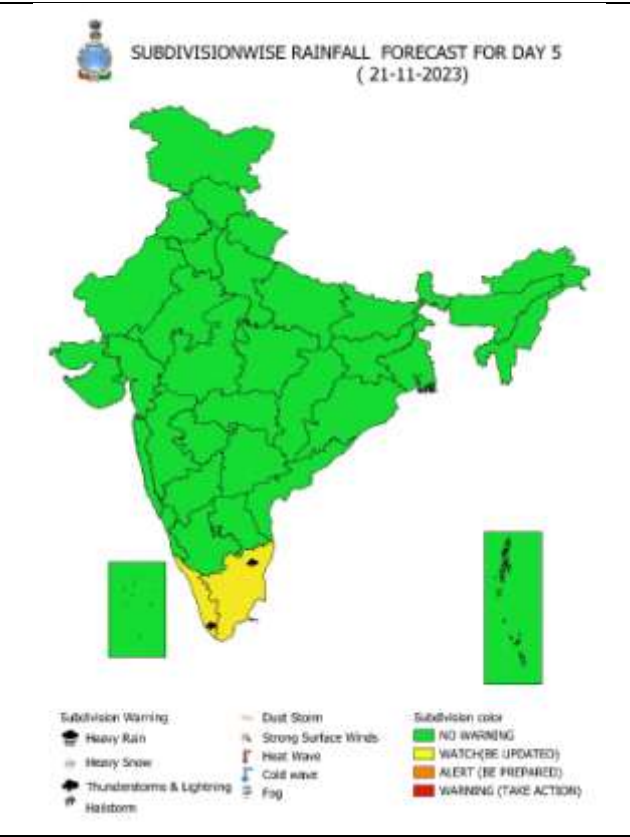
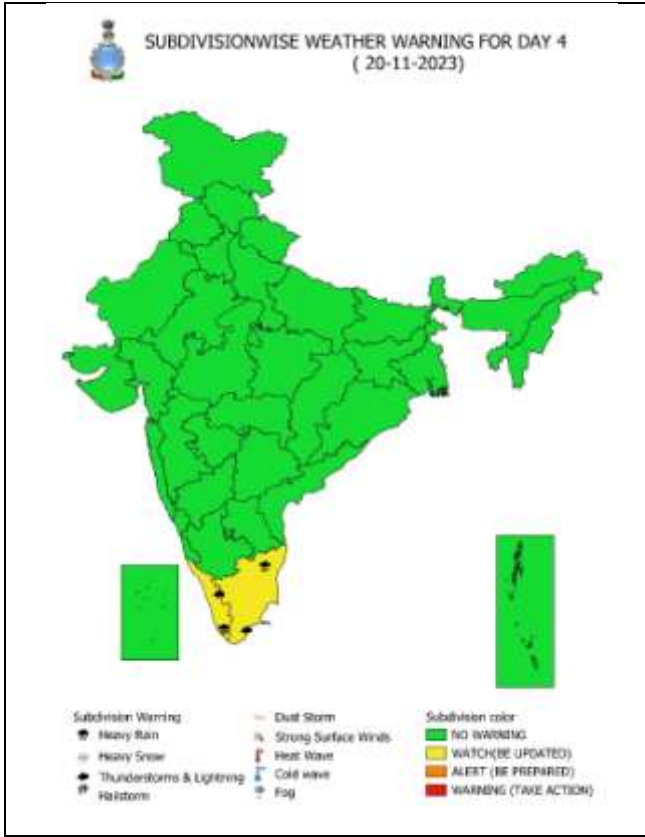
**IMPACT OVER THE SEA**

MSW (knot/kmph)	Impact	Action
28-33 (52-61)	Very rough seas	Total suspension of fishing operations
34-49 (62-91)	High to very high seas	Total suspension of fishing operations
50-63 (92-117)	Very high seas	Total suspension of fishing operations
≥ 64 (≥118)	Phenomenal	Total suspension of fishing operations

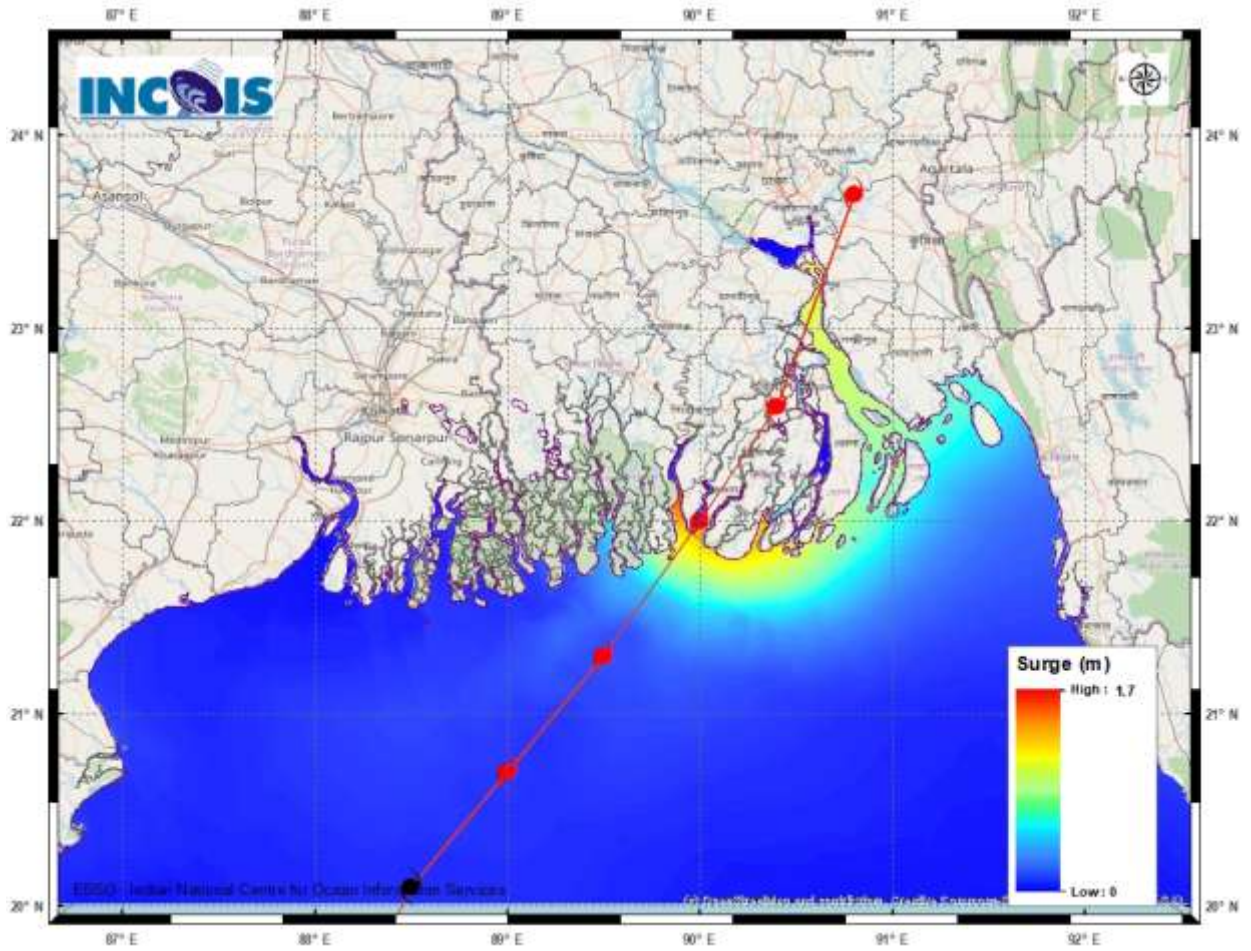


# WEATHER WARNING GRAPHICS





# STORM SURGE GUIDANCE



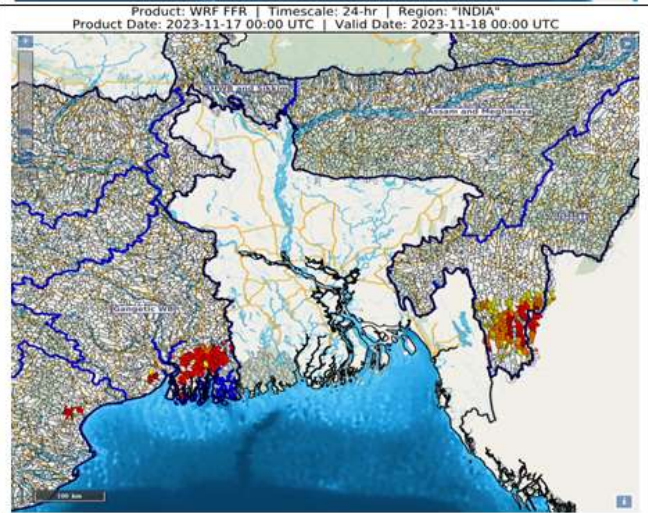


# FLASH FLOOD GUIDANCE

## 24 hours Outlook for the Flash Flood Risk (FFR) till 0530 IST of 18-11-2023 :

Moderate flash flood risk likely over few watersheds & neighbourhoods of NMMT and Gangetic West Bengal Met Sub-divisions during next 24 hours.

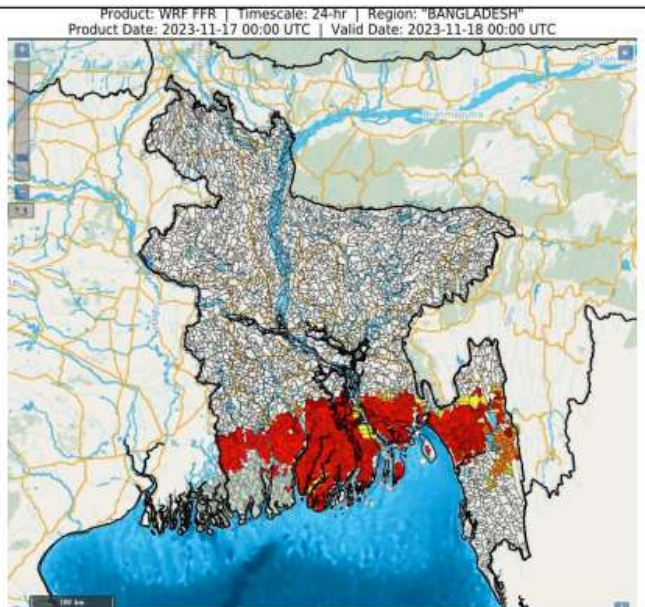
Surface runoff/ Inundation may occur at some fully saturated soils & low-lying areas over AoC as shown in map due to expected rainfall occurrence in next 24 hours.



## 24 hours Flash Flood Risk Outlook till 00 UTC of 18.11.2023:


Moderate flash flood risk likely over few watersheds & neighbourhoods of Southern parts of Bangladesh for next 24 hours.

Surface runoff/ Inundation may occur at some fully saturated soils & low-lying areas over AoC as shown in map due to expected rainfall occurrence in next 24 hours.



### Flash Flood Risk

 High Risk (Take Action)

 Moderate Risk (Be Prepared)

 Low Risk (Be Updated)

## Fishermen warning graphics

Day 1: 17.11.2023/11:30AM to 18.11.2023/05:30AM



Day 2: 18.11.2023/05:30AM to 19.11.2023/05:30AM



Day 3: 19.11.2023/05:30AM to 20.11.2023/05:30AM



Day 4: 20.11.2023/05:30AM to 21.11.2023/05:30AM



Day 5: 21.11.2023/05:30AM to 22.11.2023/05:30AM



Squally WX with wind speed 40-45 kmph gusting to 55 kmph

Squally WX with wind speed 45-55 kmph gusting to 65 kmph

Squally wind with speed 50-60 kmph gusting to 70 kmph

CS with Gale wind speed 60-90 kmph gusting to 110 kmph

**Fishermen are advised not to venture into the marked areas.**